



Friday Flyer

Friday 29th March 2024

Varley Street, Miles Platting, Manchester, M40 7EJ

Tel: (0161) 519 8562

Headteacher: Ms S Navin

Big thank you to everyone

We have raised
£128.19 for Red
Nose Day along
with the food dona-
tions.

Big thank you to everyone

We have raised
£378.00 from the
Easter raffle.
Congratulations to
those children who
won!

Dates for your diary

27th March—Last day of term

15th April— Children return to school



NATIONAL CYCLING CENTRE

VIDA EASTER CAMP

HOLIDAY ACTIVITIES & FOOD PROGRAMME
FREE SPACES ELIGIBLE FOR BENEFITS RELATED FREE SCHOOL MEALS

NATIONAL CYCLING CENTRE
9TH-12TH APRIL 9.30 - 2.30PM **AGES 5-15**
BMX TRACK CYCLING, FUTSAL, BADMINTON, HOCKEY, ART, BOXING, HOCKEY & MORE...



Carmel
National Cycling Centre
Co-Ordinator



Leon
Belle Vue Leisure Centre
Co-Ordinator



REGISTRATION LINK
www.vidauk.org

More Information
07427 755463

National Cycling Centre
Stuart St, Manchester M11 4DQ

MCRactive

Amazing Attendance & Perfect Punctuality

Well done to all the children who are continuing to make it in to school on time. We are still seeing a high number of children turning up late for school. We understand that this can happen on occasion but it does have an impact when it is regular.

Lateness = Lost learning (Figures are calculated over the year)	
5 minutes late each day	3 days lost
10 minutes late each day	6.5 days lost
15 minutes late each day	10 days lost
20 minutes late each day	13 days lost
30 minutes late each day	19 days lost

Last week's whole school attendance was 93.8%. Our whole school attendance for this week has dropped to 91.2%. Our whole school attendance to date has stayed at 92.8%. Let's work together to improve our whole school attendance, let's get closer to meeting our attendance goal of 96%. Reminder that if a class receives 100% attendance for the whole week, they receive a special treat. Well done to RV, 2V and 4P for achieving this.



The winners of our attendance mascots are:- RP, 2V 4P

The winners of the punctuality mascots are:- RP, 1P, 4V



GOLDEN BALLOONS are presented to classes with everybody in school and on time.
Well done to 1P.



Packed Lunches

FRUIT



VEGETABLES



PROTEIN



DAIRY



WHOLE GRAINS



DRINKS



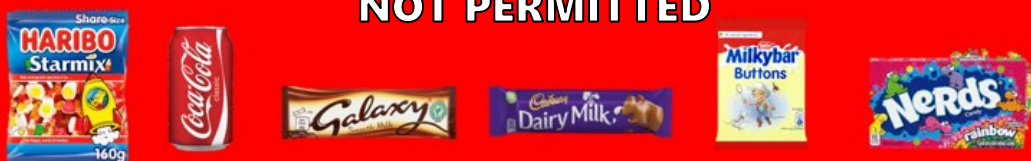
HEALTHIER ALTERNATIVES



OCCASIONAL TREATS



NOT PERMITTED



If your child comes to school with snacks that are not permitted in their packed lunch (e.g. fizzy drinks, chocolate bars or sweets), they will not be able to eat these items and a slip will be sent home in your child's lunchbox.

UNIFORM

It is important that parents are putting their children's names in their uniform, PE kits, coats, hats, scarves, gloves etc. We have a huge pile of lost property at the office with no way of identifying who it belongs to. If your child has lost an item please collect it.



- Grey or black trousers, skirt or pinafore
- White polo shirt or blouse/shirt
- Navy blue sweatshirt or cardigan (This does not have to have the school logo on)
- White, grey, black or navy socks or tights



PE KIT

-
- Navy blue shorts and a plain white t-shirt
- Blue or black track suit bottoms may be worn during colder months
- Trainers or pumps

To comply with Health and Safety regulations no jewellery can be worn in PE lessons. Children must remove stud earrings and watches themselves before the PE lesson. Parents may wish to send children to school without stud earrings and watches on PE days. School staff will not be responsible for earrings and watches removed for PE.

Buy the uniform here:

<https://app.parentpay.com/ParentPayShop/Uniform/Default.aspx?shopid=3708>

