



# Friday Flyer

Friday 12th January 2024

Varley Street, Miles Platting, Manchester, M40 7EJ

Tel: (0161) 519 8562

Headteacher: Ms S Navin



**NORTH MANCHESTER  
GENERAL GYMNASTICS  
CLUB**

Main site:

Sportcity Gate 13, Rowsley Street,

Manchester M11 3FF

Telephone: 07988381038

**FREE TRIAL**

**GENERAL GYMNASTICS**

**January Open Day**

Our purpose is to deliver gymnastics lessons to the local Eastland community and the surrounding area.

Come and see what all the excitement is about on our open day on **January 10, 17 24 and 31 Sportcity Gate 13, Rowsley Street, Manchester M11 3FF**. Check the place out, meet our lead teacher and try out some taster classes and hang out with us.

We'll be running taster sessions so you can just drop in and try lots of different gymnastics floor movements, beam, shiny bars and rope climb. Plus our 30m tumble track for FLIPS! **Please book yourself/child in advance. Places will be secured with pre-bookings only!! ALL AGES WELCOME 3-16YRS!**

Check out the classes on <https://www.northmanchestergeneralgymnasticsclub.com/> and book your child/children a place now! Staff, friends and family may book their children spaces to. Our open day is free to try. T&C's apply. \*Sportcity require a £2.50 entry fee per child and that fee is paid directly to Sportcity via better.org app. We also have several intro courses starting in the new year so if you want a more in-depth learning experience you can book onto a course and go from strength to strength each week. **Book a space TEXT OR CALL 07988381038!!**

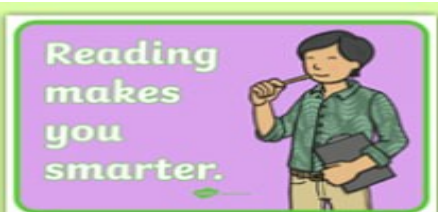
NORTH MANCHESTER

GENERAL GYMNASTICS CLUB

**Dates for your  
diary**

Tuesday 23rd January—5V class assembly

Friday 26th January- year 5 Author visit



# Amazing Attendance & Perfect Punctuality

Well done to all the children who are continuing to make it in to school on time. We are still seeing a high number of children turning up late for school. We understand that this can happen on occasion but it does have an impact when it is regular.

Lateness = Lost learning (Figures are calculated over the year)	
5 minutes late each day	3 days lost
10 minutes late each day	6.5 days lost
15 minutes late each day	10 days lost
20 minutes late each day	13 days lost
30 minutes late each day	19 days lost

Last week's whole school attendance was, very low, 88.9%. Our whole school attendance for this week has risen to 93.1%. Our whole school attendance to date has stayed at 93.1%. Let's work together to get even closer to meeting our attendance goal of 96%.



The winners of our attendance mascots are:- RP, 1P 6V  
The winners of the punctuality mascots are:- RV, 2P, 6P



**GOLDEN BALLOONS** are presented to classes with everybody in school and on time. We have given quite a few this week. Well done to RP, RV, 1P, 2P & 3V!



# Packed Lunches

## FRUIT



## VEGETABLES



## PROTEIN



## DAIRY



## WHOLE GRAINS



## DRINKS



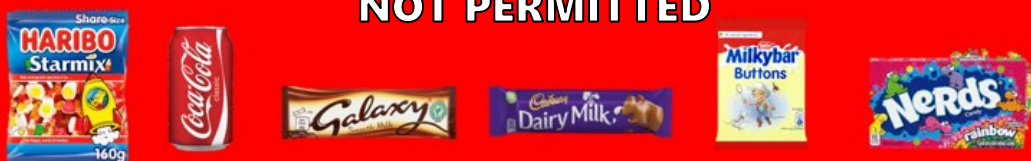
## HEALTHIER ALTERNATIVES



## OCCASIONAL TREATS



## NOT PERMITTED



If your child comes to school with snacks that are not permitted in their packed lunch (e.g. fizzy drinks, chocolate bars or sweets), they will not be able to eat these items and a slip will be sent home in your child's lunchbox.



# UNIFORM



- Grey or black trousers, skirt or pinafore
- White polo shirt or blouse/shirt
- Navy blue sweatshirt or cardigan (This does not have to have the school logo on)
- White, grey, black or navy socks or tights
- Plain black shoes or trainers.
- Navy blue hijab



## PE KIT

- 
- Navy blue shorts and a plain white t-shirt
- Blue or black track suit bottoms may be worn during colder months
- Trainers or pumps



To comply with Health and Safety regulations no jewellery can be worn in PE lessons. Children must remove stud earrings and watches themselves before the PE lesson. Parents may wish to send children to school without stud earrings and watches on PE days. School staff will not be responsible for earrings and watches removed for PE.

Buy the uniform here:

<https://app.parentpay.com/ParentPayShop/Uniform/Default.aspx?shopid=3708>