



# Friday Flyer

Friday 24th November 2023

Varley Street, Miles Platting, Manchester, M40 7EJ

Tel: (0161) 519 8562

Headteacher: Ms S Navin

## Park View Loves Reading!

We are having a big push on developing the love of reading at Park View. You can support your child by reading with them at home.

Thank you everyone, for donating to Children in need at Park View Community School.

Together we have raised:

£224.84!

Well Done everyone!



## Dates for your diary

Thursday 7th December 9.30am and 2.15pm – Nursery/Reception Christmas Sing Along

Friday 8th December– Christmas Jumper and Christmas dinner day.

Tuesday 12th December at 2.15pm – Year 1/Year 2 Christmas Show – The Christmas Tree Nativity

Tuesday 12th December at 9.30am – Year 3, 4, 5 & 6 Christmas Show – Rock Around the Flock

Wednesday 13th December at 9.30am – Year 1/Year 2 Christmas Show – The Christmas Tree Nativity

Wednesday 13th December at 2.15pm – Year 3, 4, 5 & 6 Christmas Show – Rock Around the Flock

Thursday 14th December– Christmas Party day.

Friday 15th December - Sing-Along 9:15am KS2 playground

Friday 15th December– Last day of term.

## Important Christmas Events:

-EYFS CHRISTMAS SING ALONG Thursday 7th December 9.30am and 2.15pm.

-KS1 CHRISTMAS SHOW – THE CHRISTMAS TREE NATIVITY Tuesday 12th December at 2:15am and Wednesday 13th December 9:30pm.

-KS2 CHRISTMAS SHOW – ROCK AROUND THE FLOCK Tuesday 12th December at 9.30am and Wednesday 13th December at 2.15pm.

Each class are doing two performances to enable all parents/carers the opportunity to watch their child's show. However, as numbers are limited in the hall parents/carers will only be issued tickets to watch one of the performances. More information regarding tickets will be sent via email next week.

# Amazing Attendance & Perfect Punctuality

Well done to all the children who are continuing to make it in to school on time. We are still seeing a high number of children turning up late for school. We understand that this can happen on occasion but it does become a concern when it is regular.

Lateness = Lost learning (Figures are calculated over the year)	
5 minutes late each day	3 days lost
10 minutes late each day	6.5 days lost
15 minutes late each day	10 days lost
20 minutes late each day	13 days lost
30 minutes late each day	19 days lost

Last week's whole school attendance was 93.1%. Our whole school attendance for this week has risen to 93.5%.

.Let's work together to get even closer to meeting our attendance goal of 96%.



The winners of our attendance mascots are:- RV, 1P, 5V  
The winners of the punctuality mascots are:- RP, 2P, 4V



**GOLDEN BALLOONS** are presented to classes with everybody in school and on time, 4V & 6P received golden balloons.



# Packed Lunches

## FRUIT



## VEGETABLES



## PROTEIN



## DAIRY



## WHOLE GRAINS



## DRINKS



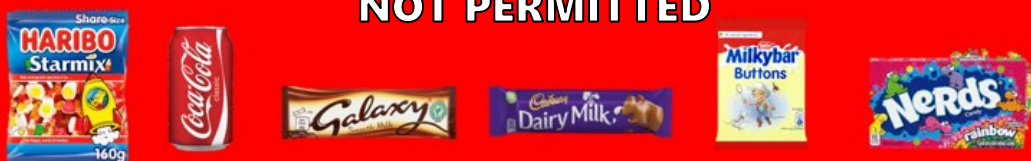
## HEALTHIER ALTERNATIVES



## OCCASIONAL TREATS



## NOT PERMITTED



If your child comes to school with snacks that are not permitted in their packed lunch (e.g. fizzy drinks, chocolate bars or sweets), they will not be able to eat these items and a slip will be sent home in your child's lunchbox.



# UNIFORM



- Grey or black trousers, skirt or pinafore
- White polo shirt or blouse/shirt
- Navy blue sweatshirt or cardigan (This does not have to have the school logo on)
- White, grey, black or navy socks or tights
- Plain black shoes or trainers.
- Navy blue hijab



## PE KIT

- 
- Navy blue shorts and a plain white t-shirt
- Blue or black track suit bottoms may be worn during colder months
- Trainers or pumps



To comply with Health and Safety regulations no jewellery can be worn in PE lessons. Children must remove stud earrings and watches themselves before the PE lesson. Parents may wish to send children to school without stud earrings and watches on PE days. School staff will not be responsible for earrings and watches removed for PE.

Buy the uniform here:

<https://app.parentpay.com/ParentPayShop/Uniform/Default.aspx?shopid=3708>