



# Friday Flyer

Friday 10th November 2023

Varley Street, Miles Platting, Manchester, M40 7EJ

Tel: (0161) 519 8562

Headteacher: Ms S Navin

## Park View Loves Reading!

We are having a big push on developing the love of reading at Park View. You can support your child by reading with them at home.

Giving a child time and full attention when reading them a story tells them they matter. It builds self-esteem, vocabulary, feeds imagination and even improves their sleeping patterns.

## Dates for your diary

Monday 13th November– Anti-Bullying week and odd sock day.

Tuesday 14th November- Parents evening on phone.

Tuesday 14th November—Individual and sibling photo day

Wednesday 15th November- Parents evening in person.

Friday 17th November– Children in need day.

Next Week is Anti-bullying. On Monday we are encouraging all pupils to come to school wearing odd socks. We hope you are able to join in with this.

### Odd Socks Day

All you need to do is wear odd socks! It's a great way to celebrate what makes us all unique in Anti-Bullying Week!



Children in Need day  
on the Friday  
17th November.

The children can come dressed in bright clothing or dots, for a suggested donation of £1.00.

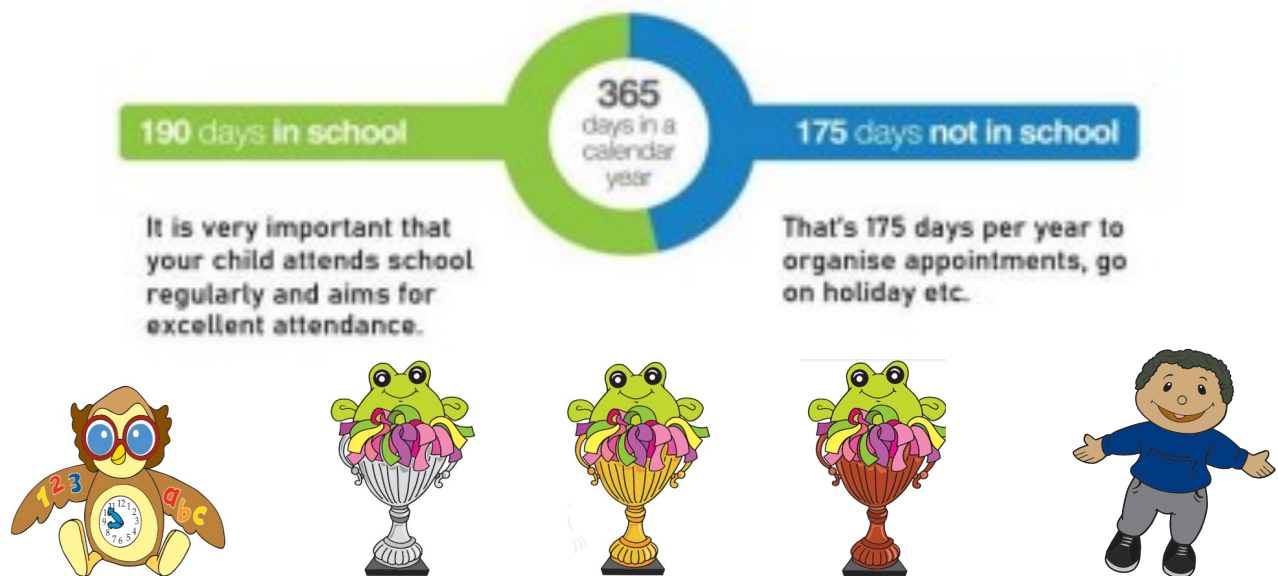
# Amazing Attendance & Perfect Punctuality

Well done to all the children who are continuing to make it in to school on time. We are still seeing a high number of children turning up late for school. We understand that this can happen on occasion but it does have an impact when it is regular. School starts at 8:50am, your child needs to be on the school grounds before this time.

Lateness = Lost learning (Figures are calculated over the year)	
5 minutes late each day	3 days lost
10 minutes late each day	6.5 days lost
15 minutes late each day	10 days lost
20 minutes late each day	13 days lost
30 minutes late each day	19 days lost

Last week's whole school attendance was 93.1%. Our whole school attendance for this week is very low at 91.6%.

.Let's work together to get even closer to meeting our attendance goal of 96%.



The winners of our attendance mascots are:- RP, 1P, 5V  
The winners of the punctuality mascots are:- RV, 1P, 4V

**GOLDEN BALLOONS** are presented to classes with everybody in school and on time.



# Packed Lunches

## FRUIT



## VEGETABLES



## PROTEIN



## DAIRY



## WHOLE GRAINS



## DRINKS



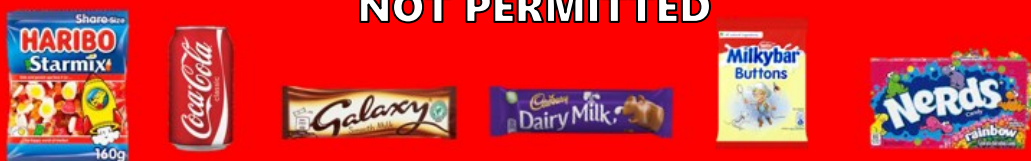
## HEALTHIER ALTERNATIVES



## OCCASIONAL TREATS



## NOT PERMITTED



If your child comes to school with snacks that are not permitted in their packed lunch (e.g. fizzy drinks, chocolate bars or sweets), they will not be able to eat these items and a slip will be sent home in your child's lunchbox.





## Halloween celebrations in Afterschool Club.



# UNIFORM



- Grey or black trousers, skirt or pinafore
- White polo shirt or blouse/shirt
- Navy blue sweatshirt or cardigan (This does not have to have the school logo on)
- White, grey, black or navy socks or tights
- Plain black shoes or trainers.

## PE KIT

- 
- Navy blue shorts and a plain white t-shirt
- Blue or black track suit bottoms may be worn during colder months
- Trainers or pumps

To comply with Health and Safety regulations no jewellery can be worn in PE lessons. Children must remove stud earrings and watches themselves before the PE lesson. Parents may wish to send children to school without stud earrings and watches on PE days. School staff will not be responsible for earrings and watches removed for PE.

