



# Friday Flyer

Friday 13th October 2023

Varley Street, Miles Platting, Manchester, M40 7EJ

Tel: (0161) 519 8562

Headteacher: Ms S Navin

## Park View Loves Reading!

We are having a big push on developing the love of reading at Park View. You can support your child by reading with them at home.

## A Very Fond Farewell

At the end of next week we will say a heartfelt goodbye to two of our longest serving staff, Mrs Morris and Mrs Rowbotham. Both have dedicated most of their career in school to the children of Park View and have touched the lives of many generations of children from many families in the Park View community. Their dedication to the school and to the children and families of Park View has been second to none and we will miss them both tremendously. We hope that you will join us in wishing both of them the very best for the future.

## Dates for your diary

Whole of October - Black History Month. Keep an eye on your child's Class Dojo for more information.

Tuesday 17th October - Year 4 Jorvik Centre Trip

Wednesday 18th October - Whole School Assemble - 'No Time to Waste'

Friday 20th October - Break up for half term

Monday 30th October - School reopens

## CUSTOMER INFORMATION



MCRactive

BETTER

October Half Term Tennis and Football Camp. 9.30am-3.30pm.

Ages 5-10 beginners very welcome, all equipment provided.

Please book online through the Better UK app, website

Or use the below link

[Tennis & Football Holiday Camp](#)

BETTER

MCRactive

let's get digital

get online week

Try something new!  
@Parish Church of  
the Apostles

Ridgeway St, Manchester M40 7FY

19th October  
from  
12pm to 4:30pm

Pop in if you'd like to find out about what digital support is available, and what sorts of digital skills you can learn from a range of organisations

@LetsGetDigiMcr #GetOnlineWeek #TryOneThing



## Harvest Time!

Next Thursday 19th October we will be holding our annual Park View Harvest assembly. Unfortunately due to limited space parents and carers are not invited at this time. We would appreciate donations of tins, dry foods and some fresh items. Please keep a look out on your child's class dojo for videos and photos from the assembly.



## Amazing Attendance & Perfect Punctuality

Well done to all the children who are continuing to make it in to school on time. We are still seeing a high number of children turning up late for school. We understand that this can happen on occasion but it does have an impact when it is regular.

Last week's whole school attendance was 93.5%. Our whole school attendance for this week has risen to 93.9%. Our whole school attendance to date has also risen to 94%. Let's work together to get even closer to meeting our attendance goal of 96%.



The winners of our attendance mascots are:- RP 1P, 4V  
The winners of the punctuality mascots are:- RV 1P,  
3V



**GOLDEN BALLOONS** are presented to classes with everybody in school and on time.  
Well done to 1P & 5V.





# Packed Lunches

## FRUIT



## VEGETABLES



## PROTEIN



## DAIRY



## WHOLE GRAINS



## DRINKS



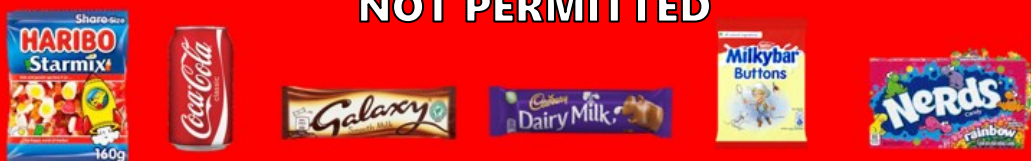
## HEALTHIER ALTERNATIVES



## OCCASIONAL TREATS



## NOT PERMITTED



If your child comes to school with snacks that are not permitted in their packed lunch (e.g. fizzy drinks, chocolate bars or sweets), they will not be able to eat these items and a slip will be sent home in your child's lunchbox.



# UNIFORM



- Grey or black trousers, skirt or pinafore
- White polo shirt or blouse/shirt
- Navy blue sweatshirt or cardigan (This does not have to have the school logo on)
- White, grey, black or navy socks or tights
- Plain black shoes or trainers.
- Navy blue hijab



## PE KIT

- 
- Navy blue shorts and a plain white t-shirt
- Blue or black track suit bottoms may be worn during colder months
- Trainers or pumps

To comply with Health and Safety regulations no jewellery can be worn in PE lessons. Children must remove stud earrings and watches themselves before the PE lesson. Parents may wish to send children to school without stud earrings and watches on PE days. School staff will not be responsible for earrings and watches removed for PE.

