



Friday Flyer

Friday 6th October 2023

Varley Street, Miles Platting, Manchester, M40 7EJ

Tel: (0161) 519 8562

Headteacher: Ms S Navin

Park View Loves Reading!

We are having a big push on developing the love of reading at Park View. You can support your child by reading with them at home.

Sharing stories with your child helps them to . .

- Do better in all lessons
- Sleep Better
- Have close family bonds
- Concentrate better
- Understand the world and others
- Be happier
- Develop brain growth

Dates for your diary

Whole of October - Black History Month. Keep an eye on your child's Class Dojo for more information.

Thursday 12th October- Year 6 - Bonfire talk with GMFRS

Tuesday 17th October - Year 4 Jorvik Centre Trip

Wednesday 18th October- Whole School Assemble - 'No Time to Waste'

Friday 20th October - Break up for half term

Monday 30th October - School reopens

General News

FREE
LUNCH PROVIDED
AGES 5 - 11
BOYS & GIRLS

FC United of Manchester October Sports & Activity Camp

Broadhurst Park, 10am - 2pm
23rd, 24th, 26th, & 27th October 2023 (no session on the 25th)

Our camp will offer a diverse range of fun activities carefully designed to stimulate physical, mental, and social growth, as well as providing children with a warm lunch time meal.

To book visit:
mcractive.com/activity/holiday-activity-in-manchester / Or Scan:

HOLIDAY ACTIVITIES – October Half Term

MCRactive and Manchester City Council are offering thousands of FREE places for children to access a variety of activities & a FREE meal over the October Half Term in Manchester for those on benefit - related free school meals. To book your child's space: Sign up for a MCRactive Go account

Amazing Attendance & Perfect Punctuality

Well done to all the children who are continuing to make it in to school on time. We are still seeing a high number of children turning up late for school. We understand that this can happen on occasion but it does become a concern when it is regular.

Lateness = Lost learning (Figures are calculated over the year)	
5 minutes late each day	3 days lost
10 minutes late each day	6.5 days lost
15 minutes late each day	10 days lost
20 minutes late each day	13 days lost
30 minutes late each day	19 days lost

Last week's whole school attendance was 92.9%. Our whole school attendance for this week has risen to 93.5%. Our whole school attendance to date has also risen to 93.8%, well done. Let's work together to get even closer to meeting our attendance goal of 96%. Reminder that if a class receives 100% attendance for the whole week, they receive a special treat.



The winners of our attendance mascots are:- RP, 1P, 4P
The winners of the punctuality mascots are:- RV, 2P, 4V



GOLDEN BALLOONS are presented to classes with everybody in school and on time. Well done to RV, 4P, 6P for receiving a golden balloon.



Packed Lunches

FRUIT



VEGETABLES



PROTEIN



DAIRY



WHOLE GRAINS



DRINKS



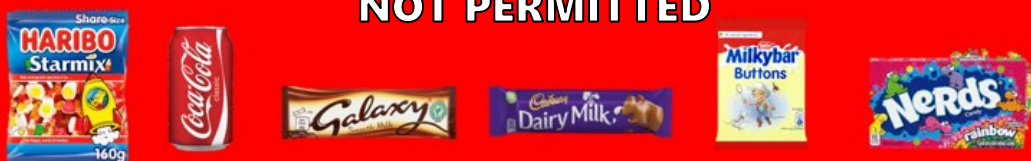
HEALTHIER ALTERNATIVES



OCCASIONAL TREATS



NOT PERMITTED



If your child comes to school with snacks that are not permitted in their packed lunch (e.g. fizzy drinks, chocolate bars or sweets), they will not be able to eat these items and a slip will be sent home in your child's lunchbox.



UNIFORM



- Grey or black trousers, skirt or pinafore
- White polo shirt or blouse/shirt
- Navy blue sweatshirt or cardigan (This does not have to have the school logo on)
- White, grey, black or navy socks or tights
- Plain black shoes or trainers.
- Navy blue hijab



PE KIT

-
- Navy blue shorts and a plain white t-shirt
- Blue or black track suit bottoms may be worn during colder months
- Trainers or pumps

To comply with Health and Safety regulations no jewellery can be worn in PE lessons. Children must remove stud earrings and watches themselves before the PE lesson. Parents may wish to send children to school without stud earrings and watches on PE days. School staff will not be responsible for earrings and watches removed for PE.

